



# Whitfield County, Georgia



# History

- Whitfield County was created by an Act of the General Assembly in 1851
- Created from part of Murray County
- Named after George Whitefield, who was an Evangelical Minister from Savannah, Georgia—he did not ever visit North Georgia



# Counties in Georgia

- There are 159 counties in the State of Georgia
- Georgia has more counties than any other state besides Texas
- Counties are subdivisions of the State of Georgia



# Whitfield County Quick Facts

- County Population = 102,945 (2013 estimate)
- Land Area in Square Miles = 290
- Unincorporated Millage Rate 2014 = 8.061 (Ranked 20<sup>th</sup> lowest in state)
- Per Capita Income Whitfield = \$19,497  
Per Capita Income State of Georgia = \$25,182
- Homestead Exemption = \$20,000 (2<sup>nd</sup> highest in state)
- No Excise Tax on Energy for Manufacturers
- 100% Freeport Exemption
- Economic Ranking based on Net Digest = 24<sup>th</sup> in state (per 2011 update)

# Whitfield County Government

- Until 1964, the governing authority of Whitfield County resided in one Sole Commissioner of Roads and Revenues
- By a local Act of the General Assembly in 1964, a five-person Board of Commissioners was created to govern Whitfield County



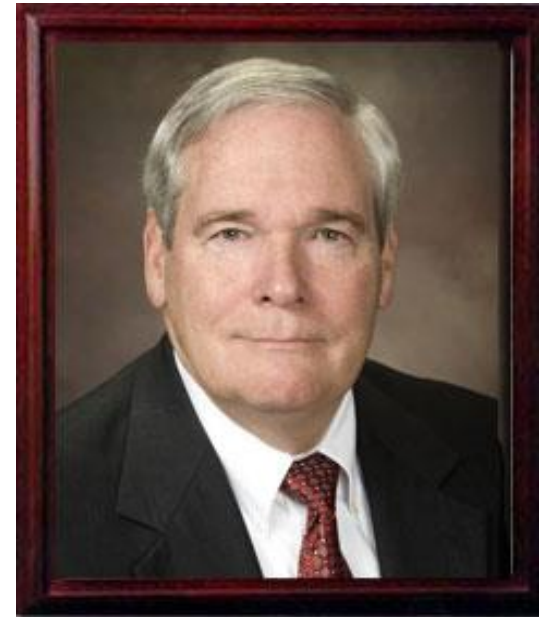


# Qualifications for Commissioners in 1964

- 25 Years of Age
- Live in Whitfield County Two Years Prior to Election
- No Felony Convictions
- Must own land in Whitfield County
- Must be qualified and registered to vote in Whitfield County
- Pay was \$50/month

# Chairman

- Since 1986, the Chairman is elected at-large and runs for the Chairman position
- The Chairman may not make a motion or second a motion and typically chooses to vote only in the case of a tie

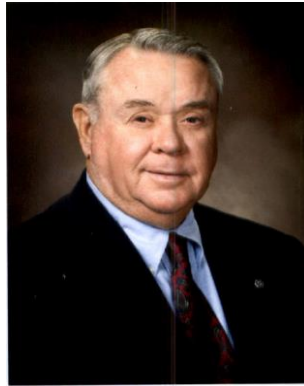


Mike Babb,  
Chairman of BOC

# Current Commissioners



Barry Robbins,  
District 1



Harold Brooker,  
District 2



Roger Crossen,  
District 3



Lynn Laughter,  
District 4



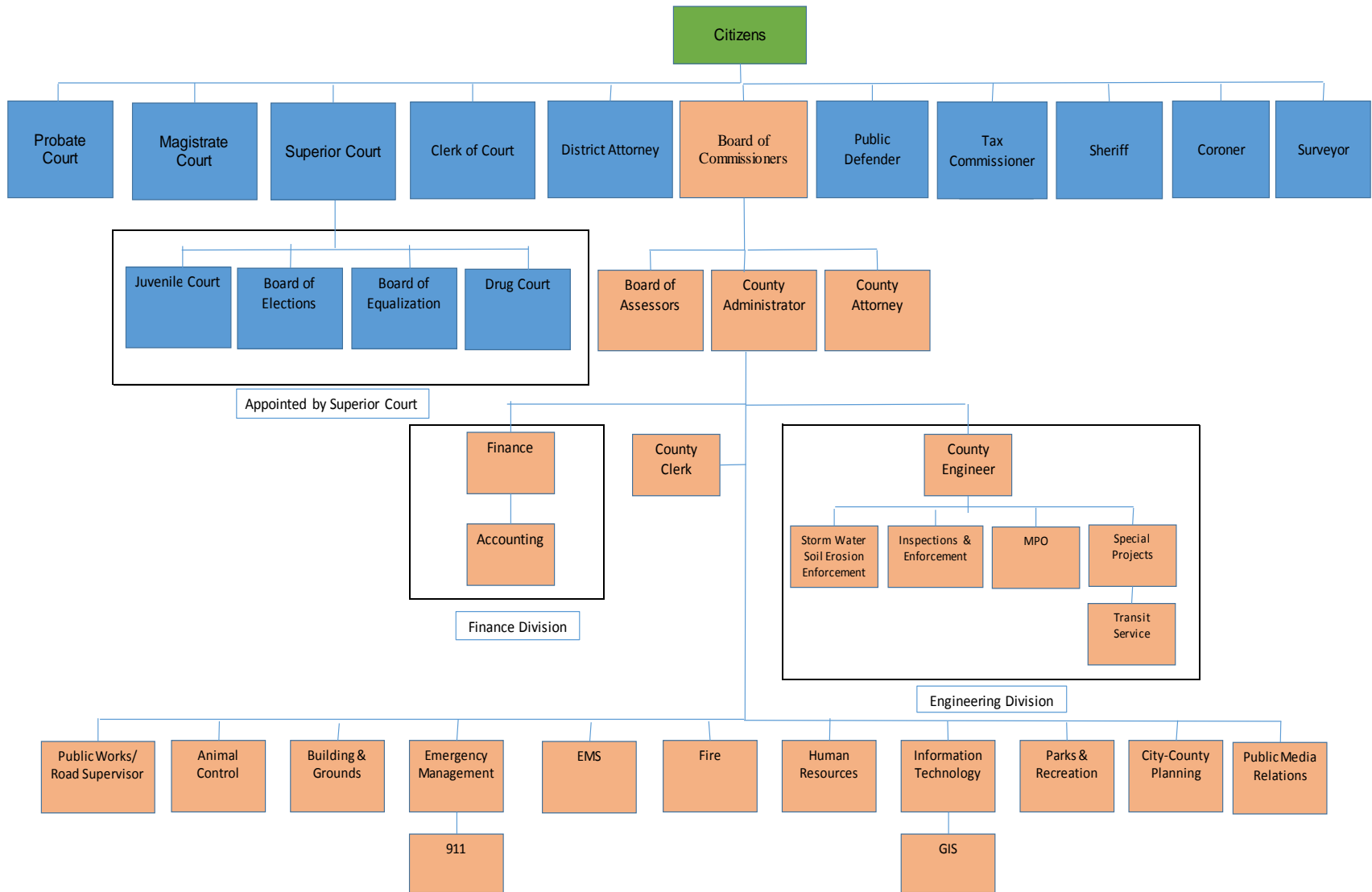
# County Administrator

- The local legislation creating the Board of Commissioners (BOC) originally called the position, “Comptroller”, until 1971, when the position was officially changed to County Administrator
- Must be at least 25 years of age
- By its local legislation, Whitfield County operates under a County Administrator form of government, rather than a County Manager form of government
- The County Administrator does not have authority to hire/fire Department Heads. In a County Manager form of government, the Manager has such authority.



Mark Gibson,  
County Administrator

# Whitfield County Government Organizational Chart



# County Departments Under BOC Direct Control

- Public Works
- Administration (Human Resources, Finance, Clerk, Information Technology, Buildings and Grounds)
- Recreation
- Fire
- EMA
- 911
- GIS
- Animal Shelter
- Tax Assessor's Office
- Engineer
- Planning
- Transit
- MPO



# Constitutional Officers

- Pursuant to the Georgia Constitution, there are five Constitutionally elected officers:
  - Sheriff
  - Tax Commissioner
  - Chief Magistrate
  - Probate Judge
  - Clerk of Superior Court
- Each officer is independently elected and has sole control of his or her budget.
- BOC is required to fund Constitutional officers' operations adequately for them to perform their Constitutionally mandated functions
- The Charter Legislation specifically provides that regardless of local government consolidation, these positions will remain unchanged



# Other Elected Officials

- The BOC also must fund in whole or part these operations:
  - Magistrate Judges (3)
  - Superior Court Judges (4)
  - District Attorney
  - Public Defender (Appointed)
  - Coroner



# 2015 Budget at a Glance

## General Fund

### Revenues

Taxes	\$31,394,000
Licenses and Permits	533,000
Intergovernmental Revenue	742,973
Charges for Service	3,416,248
Fines and Forfeitures	1,022,000
Investment Income	3,000
Contributions/Donations	-
Miscellaneous Income	840,460
Other Financial Sources	232,144

### **Total Revenues**

\$38,183,825

### Expenditures

General Government	\$7,256,814
Judicial	5,591,919
Public Safety	13,698,503
Public Works	6,130,504
Health & Welfare	436,000
Culture & Recreation	935,032
Housing & Development	1,902,481
Debt Service	2,037,364
Other Financing Uses	1,634,362
Contingency	800,000

### **Total Expenditures**

\$40,422,979

### **Budgeted Surplus/Deficit**

(\$2,239,154)



# 2015 Budget at a Glance

## Special Tax Districts

### Revenues

Property Tax \$4,247,282

Insurance Premium Tax 3,200,000

**Total Revenues**

\$7,447,282

### Expenditures

Fire District \$6,450,437

Dalton Regional Library 255,400

Senior Center 158,945

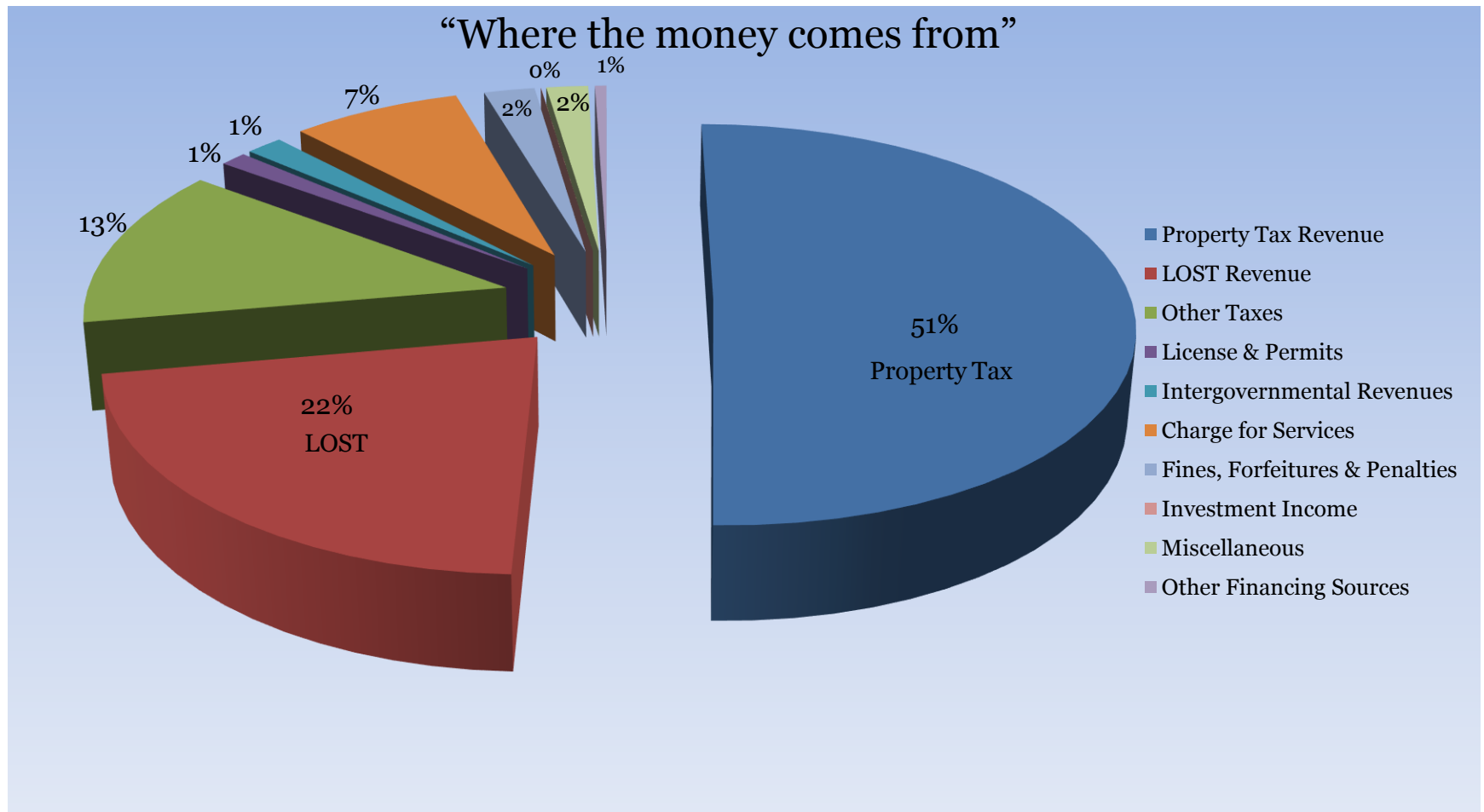
Dalton-Whitfield JDA 157,500

Solid Waste District 425,000

**Total Expenditures**

\$7,447,282

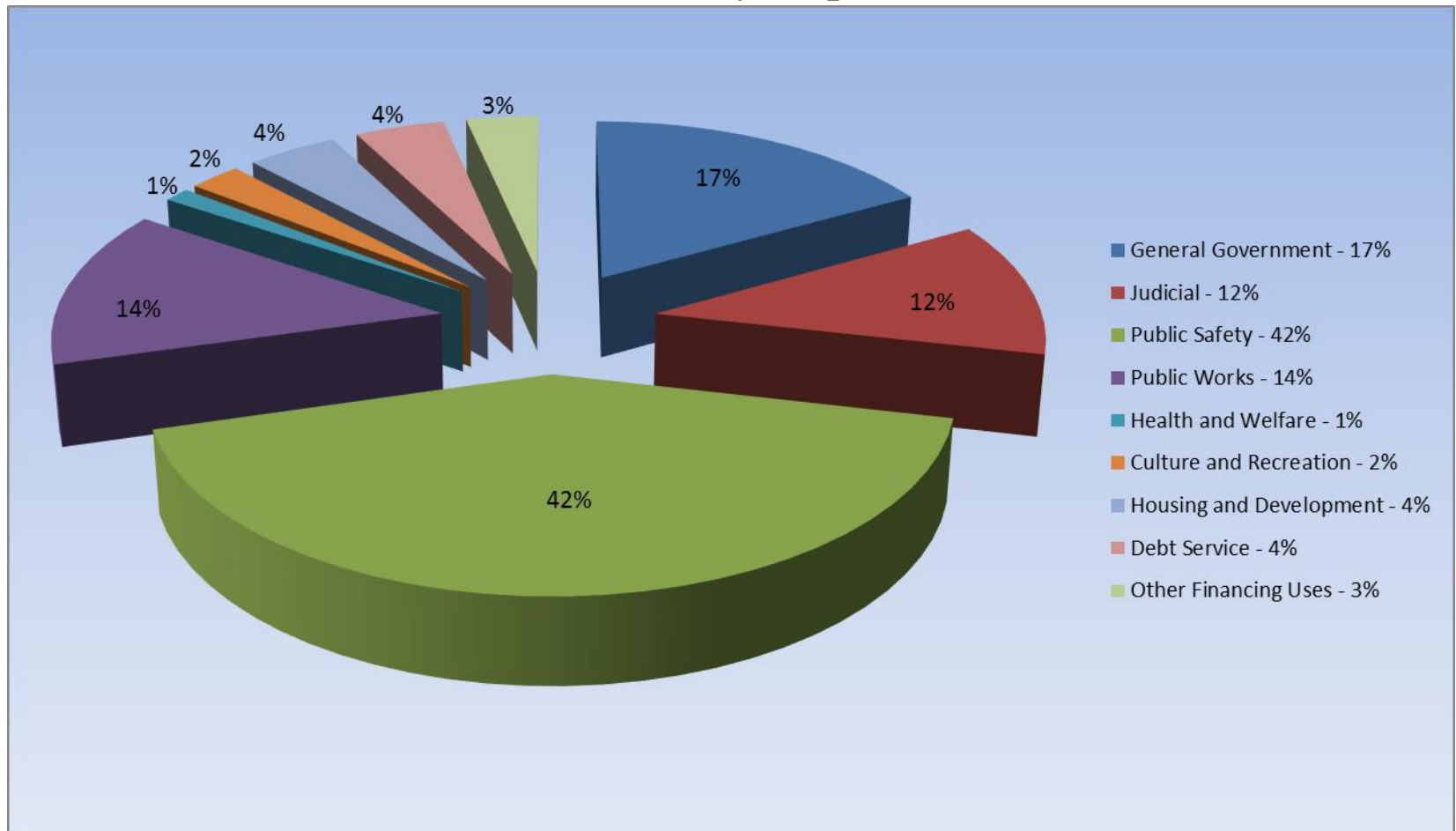
# 2015 Revenues by Category



\*\*\*Totals on this chart include special tax districts

# 2015 Expenditures by Category

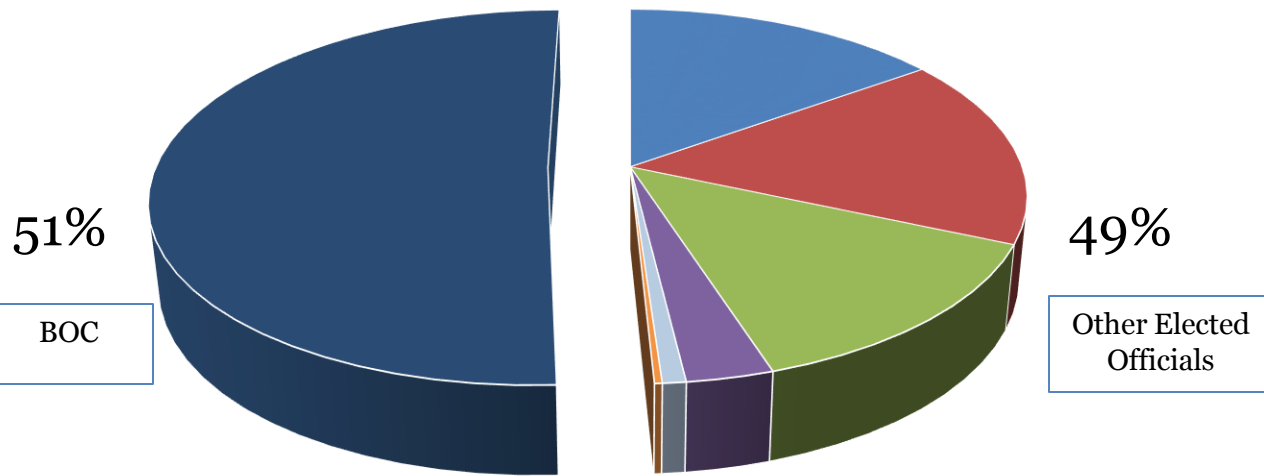
“How the money is spent”



\*\*\*Totals on this chart include special tax districts

# 2015 Budget Comparison

**Budget Comparison  
Board of Commissioners Control VS  
Constitutional & Elected Officials  
Control**



- Approximately 1/2 of Whitfield County's budget is under the BOC's direct control and approximately 1/2 is under the control of other elected officials

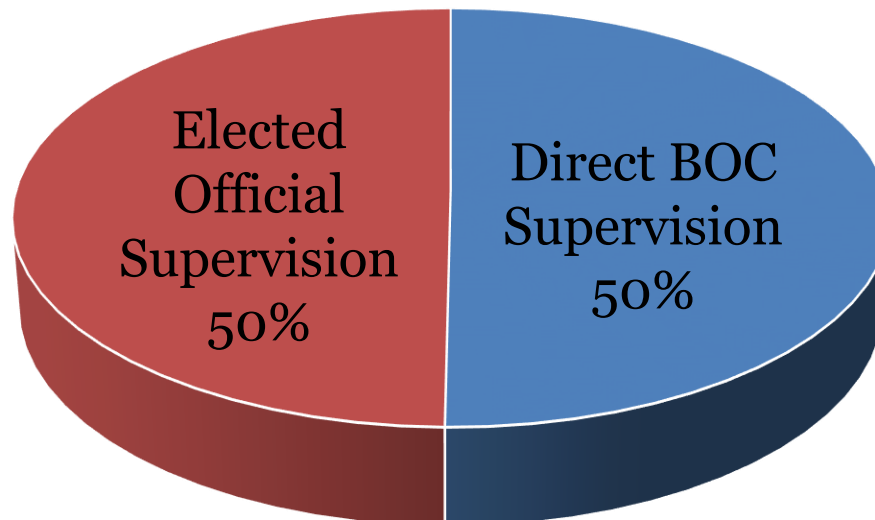
■ Sheriff-Patrol	■ Sheriff-Correctional
■ Judicial	■ Tax Commissioner
■ Board of Elections	■ Coroner
■ Board of Commissioners	

# Whitfield County Employees

- Whitfield County will employ 542 Full-Time and an additional 24 Part-Time employees in FY 2015.
- Over 58% of Whitfield County's 2015 budget is appropriated for employee salaries and benefits.
- Whitfield County employees receive benefits to include:
  - County funded Health Insurance benefits
  - ACCG sponsored defined benefit pension benefits
  - Life insurance

# Whitfield County Employees

- With a total of 542 Full-Time County employees, 270 are under the supervision of other elected officials.
- The BOC has direct supervision of 272 employees.





# County-wide Services Mandated by Law

- Courthouse
- Jail
- All County courts
- Health Department
- Coroner
- Tax Assessor
- Tax Collection
- District Attorney
- Public Defender
- Emergency Management Agency
- Indigent Funeral Expense



# Optional County-wide Services

- Fire Department
- Animal Control
- Ambulance
- Sheriff's Patrol
- 911
- Recreation
- Transit
- Library
- Senior Center



# Services Provided County-wide Pursuant to Service Delivery Agreements Between 1+ Cities

- Road paving, construction, and maintenance (all municipalities)
- MPO
- Planning
- Engineering
- Soil Erosion
- Building Inspections
- Code Enforcement



# Shared Services

- JDA
- Trade Center
- CVB
- Senior Center
- Library
- Solid Waste Authority
- CDC
- Land Bank Authority

